



American
Association of
University
Women

990
News

St. Paul Branch



February • March • April
2012



American
Association of
University
Women

National Association:

website: <http://www.aauw.org>

email: info@aauw.org

Minnesota AAUW:

website: <http://www.aauwmn.org>

St. Paul Branch AAUW:

website: <http://www.aauwstpaul.org>

Branch voicemail for general information:

651-602-9839

Business Office Staff (Brian Quist):

651-227-4477

990 News

February/March/April 2012

Table of Contents

Meal Reservations	2
Calendar at a Glance	3-5
From the President	6
Membership News	7
Membership Information	8
Bad Weather Cancellations	8
Diversity Policy	8
Membership Applications	8
Calendar Details	9-26
Branch News	27-28
HR/Business News	29
University Club	30
Branch Website and Publications	31
Bulletin Due Dates and Editor	31
Memorial Contributions	32

MEAL RESERVATIONS

Reservations made after deadlines are not assured.

Deadlines are:

Tuesday lunch: Before 9:30 AM Monday

Thursday dinner: Before 12:00 Noon Tuesday

In-House Special Events: As stated in Bulletin

1. For Reservations call 651-227-5885.
This Voice mail line is available 24 hours a day.
Give day and date of event and names of those attending.

OR

2. E-MAIL name(s) and the date and event to
reservations@stpaulcollegeclub.com
If you don't receive a confirming email almost
immediately, please call the phone line instead.
3. Cancellations after the deadline -
call the office directly 651-227-4477.
4. Costs:
Regular Luncheon Cost – \$14.00
Regular Dinner Cost – \$16.00
Meal Prices Include a 12% tip
Make checks payable to:
St. Paul AAUW
5. Please identify dietary requests in your reservation,
and also identify yourself to the server at the meal.
6. Two Handicapped parking spots are available
in back of house
or
Free Valet Parking available at regular meetings.

Tamara Sparks
Hospitality Chair

CALENDAR AT A GLANCE

February/March/April 2012

- February 6 **FIRST MONDAY** 9
9:30 a.m. Full Board Meeting
- February 7 **FIRST TUESDAY** 9-10
10:15 a.m. New Member Coffee & Chat
10:45 a.m. Meeting Begins
11:00 a.m. Local Company,
 Global Responsibility
12:00 p.m. Luncheon
1:00 p.m. MN Museum of American Art
- February 8 **WEDNESDAY** 10
5:30 p.m. Walker Art Bonus Sessions
- February 14 **SECOND TUESDAY** 11
10:30 a.m. Branch Business Meeting
11:00 a.m. A Vital Partnership
12:00 p.m. Luncheon
1:00 p.m. Great Decisions
- February 16 **THURSDAY EVENING** 12
5:30 p.m. Refreshments
6:00 p.m. Dinner
7:00 p.m. Program: Nick Coleman
- February 21 **THIRD TUESDAY** 13-14
10:00 a.m. Book Discussion
10:45 a.m. Meeting Begins
11:00 a.m. Joan Griffith: Jazz
12:00 p.m. Luncheon
1:00 p.m. Youth Performance Company

February 28	FOURTH TUESDAY	14-15
	9:59 a.m. Mystery Hour	
	10:45 a.m. Meeting Begins	
	11:00 a.m. Muddy Waters & the Minnesota River Blues	
	12:00 p.m. Luncheon	
	12:00 p.m. Prospective Member Event	
	1:00 p.m. Jane Curry: Show Excerpts	
March 1	THURSDAY	16
	11:00 a.m. Contemporary Arts Forum	
March 5	FIRST MONDAY	17
	9:30 a.m. Executive Board Meeting	
March 6	FIRST TUESDAY	17
	10:15 a.m. New Member Coffee & Chat	
	10:45 a.m. Meeting Begins	
	11:00 a.m. Women Making Change	
	12:00 p.m. Luncheon	
	1:00 p.m. Politics & Title IX	
March 13	SECOND TUESDAY	18
	10:30 a.m. Branch Business Meeting	
	11:00 a.m. An Immigrant With Global Awareness	
	12:00 p.m. Luncheon	
	1:00 p.m. Great Decisions	
March 15	THURSDAY EVENING PROGRAM	19
	5:30 p.m. Refreshments	
	6:00 p.m. Dinner	
	7:00 p.m. Program	
March 20	THIRD TUESDAY	19-20
	10:00 a.m. Book Discussion	
	10:45 a.m. Meeting Begins	
	11:00 a.m. Global Climate Change	
	12:00 p.m. Luncheon	
	1:00 p.m. Saluting Women in Theater	

March 27	FOURTH TUESDAY	20-21
	9:59 a.m. Mystery Hour	
	10:45 a.m. Meeting Begins	
	11:00 a.m. Living With the Land	
	12:00 p.m. Luncheon	
	1:00 p.m. The Importance of Bees	
April 2	FIRST MONDAY	22
	9:30 a.m. Executive Board Meeting	
April 3	FIRST TUESDAY	23
	10:15 a.m. New Member Coffee & Chat	
	10:45 a.m. Meeting Begins	
	11:00 a.m. Epidemiology: A View from the Trenches	
	12:00 p.m. Luncheon	
	1:00 p.m. TeenWise Minnesota	
April 10	SECOND TUESDAY	23
	10:30 a.m. Branch Business Meeting	
	11:00 a.m. A Woman Pirate Sails The Seas	
	12:00 p.m. Luncheon	
	1:00 p.m. Great Decisions	
April 17	THIRD TUESDAY	24-25
	10:00 a.m. Book Discussion	
	10:45 a.m. Meeting Begins	
	11:00 a.m. Pianist William Yang	
	12:00 p.m. Luncheon	
	1:00 p.m. Proposed Marriage Amendment	
April 24	FOURTH TUESDAY EVENING	26
	Scholarship Dinner	
	5:30 p.m. Gathering	
	6:00 p.m. Dinner	
	7:00 p.m. Awards and Program	
	(No daytime program)	
April 26	THURSDAY	25
	11:00 a.m. Contemporary Arts Forum	

FROM THE PRESIDENT

We all need stories! Our branch has its share. We are rooted in our foundation—the education of women and girls. In January, we delivered a special spark of funds to four community organizations to help with the deep needs in our community. Additionally, we donated to our scholarship trust and sent two major donations to AAUW. The stories from those funds are starting to be written for our history. We will soon learn if making such donations will be in store for this year.

Projects will be the key for our year as we undergo some decorating to keep the traffic coming to our house for events. As we start sprucing up our house, please keep in sight we want our members, guests and customers to feel a sense of arrival when they walk in the front door. We hope this will keep the stories of glowing reviews of our house and our branch!

We hope, as we beautify our space, we will also develop a passion for some of our social issues. We can display our zeal for those issues with a strong plan to communicate with our state and national legislative bodies. We have a strong voices and it is time to take action with e-mails and phone calls. Daily new issues seem to appear that need the clear distinctive powerful voices of independent women! We need to continue our legacy by helping write the stories of this century of razor-sharp women.

Alice Faribault
651-690-3569
afaribault@visi.com



MEMBERSHIP NEWS

The Spring 2012 Prospective Member Event will be held in the library on Tuesday, February 28, from 12:00 noon to 1:00 p.m. Lunch will be served, and prospective members are our guests for lunch. Current members are encouraged to recommend prospective members by filling out a form that can be found on the back table in the Great Hall, or by calling 651-222-5135 or e-mailing Dorothy Salesses at dosalesses@comcast.net. Board members will share information about AAUW and the St. Paul Branch during the luncheon. Please make guest reservations with Dorothy by February 21.

New Members:

Margareta Beyer
El.Ed Karlstad, Sweden
El.Ed Luther College, Iowa
MEd Univ. of MN

Jane Cacich
B.S. Univ. of MN –Duluth
M.S. St. Cloud State

Julie L. Ditzler
B.S.N. St. Catherine

Jo Ann Erickson
B.S. Univ. of MN

Susan Kunz
B.S. Briar Cliff Univ.
MEd Mankato State Univ.

Carol Schneider
B.S. Univ. of MN

Marion Soman
B.A. Univ. of MN

JoAnn Trygestad
B.S. Univ. of MN
MEd. Univ. of MN
PhD Univ. of MN

Kathleen Scanlan Tschida
B.A. College of St.
Catherine

Complete member information may be found in your AAUW Directory or obtained from Carol Shegbeby.

MEMBERSHIP INFORMATION

Bad Weather Cancellation Policy

If we should ever have to cancel due to weather, you may receive notification by the following methods:

1. check your e-mail for a message, or
2. call the house reservation line (651-227-5885) for a special message, or
3. tune in to WCCO-TV

Diversity Policy

In principle and practice AAUW values and seeks a diverse membership. There shall be no barriers to full participation in this organization on the basis of gender, race, creed, age, sexual orientation, national origin, disability, or class.

Membership Applications

Just a reminder to our members regarding potential new members: If you know of someone who has expressed an interest in St. Paul AAUW, please contact **Diane Glynn** at **651-638-9547** or **rklupper@comcast.net** and she will send out an application for membership.

Members Please Note: The next Prospective Member Event will be held at 12:00 noon on Tuesday, February 28.

Immediately inside the first floor powder room entrance is a basket containing packets, which include a letter, 990 News, an application for membership, and an informational brochure from the national organization. Should you have occasion to bring a guest who may be interested in joining, we encourage you to give your guest one of these packets. *We understand that sometimes our members forget their copies of the 990 News and would like to read the program information for that day. Should this be the case, and you wish to remove the News from a packet, we would appreciate it if you would return it to the packet at the close of the programs. Thank you.*

Are you considering holding a private event at the College Club or are you in charge of planning a particular AAUW event at our clubhouse?

If you are looking for the perfect place for a personal/private event or if you are planning a special branch event – such as a new member reception, a bridge club meeting, a travel seminar, or a fundraiser – you'll need to check with the College Club business office for the 2011-12 pricing policies, food costs and available dates. The business office will create an estimated invoice, which includes the service charge and sales tax, for your event. The staff is ready to work with you to make your event special.

Julia Lyon, Human Resources/Business Committee Chair

CALENDAR DETAILS

First Monday, February 6

9:30 a.m. Full Board Meeting

First Tuesday, February 7

10:15 a.m. New Member Coffee and Chat

10:45 a.m. Meeting Begins

February 7, 11:00 a.m.

LOCAL COMPANY, GLOBAL RESPONSIBILITY

Paul Schacht, a Senior Scientist at Ecolab's Research and Development Center in Eagan, will give us an overview of the technologies and services the company provides to the food, healthcare and hospitality markets, and the way this research contributes to the company's mission of global sustainability. Paul works in the Product Development Group of Ecolab's Food and Beverage Division, and is responsible for product development and market introduction of new cleaners, sanitizers, food surface treatments and process aids. He has also worked at Deluxe in Shoreview, developing environmentally friendly inks and cleaners.



Arlene Schacht
Environment Committee

February 7, 1:00 p.m.
**RESURRECTING THE MINNESOTA
MUSEUM OF AMERICAN ART**

As Executive Director of a homeless art museum in St. Paul, Kristin Makhholm has a big task in front of her. Working with a collection of over 4000 objects assembled since the 1940s (including works by Paul Manship, Thomas Hart Benton, Grant Wood, and Louise Nevelson) that has a one-hundred-year-plus history of teaching art and mounting great exhibitions, Dr. Makhholm is working to revive the Minnesota Museum of American Art for a new century. Come hear what it takes to get an art museum back on its feet after several years without a home. Through pictures and stories, she will discuss the direction

**MINNESOTA
MUSEUM of
AMERICAN
ART**

the museum is pursuing in art, education, and community involvement to once again become an important visual arts organization in the Twin Cities.

Sandy Crum
Education

February 8, 19, or 22
Walker Art Center Bonus Sessions



“Looking at Frank Gaard”

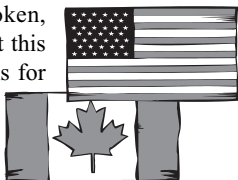
complimentary tours will be offered:
Wednesday, February 8, at 5:30 p.m.
Sunday, February 19, at 1:00 p.m.
Wednesday, February 22, at 11:00 a.m.
You are welcome to simply show up at one of these times. Meet in the Art Lab on the lower level.

Norma Cashill 651-454-1287
or 512-751-2968

**Second Tuesday, February 14
10:30 a.m. Branch Business Meeting**

**February 14, 11:00 a.m.
CANADA, MINNESOTA, & THE U.S.:
A VITAL PARTNERSHIP**

The Canada-U.S. partnership is one of job creation, interconnected trade networks, investment growth, energy development and border security. Canada is also Minnesota's largest trading partner. Come and hear Martin Loken, Canada's Consul General, tell us about this dynamic partnership and what it means for the Twin Cities and for Minnesota's trade, energy and future security.



Jill Ehlen
International

February 14, 1:00 p.m.



GREAT DECISIONS. Chapter 2: "Promoting Democracy." The U.S. has had a history of advancing and supporting democracy around the world. What place does promoting democracy have in U.S. foreign policy today? With a choice of tools ranging from economic aid to military force, what are the appropriate yet effective methods that the U.S. should use to promote democracy?

Mary Schrankler
Program Development

THURSDAY EVENING PROGRAM

February 16

5:30 – Wine Time

6:00 – Dinner

7:00 – Program

NICK COLEMAN



Journalist, educator, TV commentator, public speaker, husband, father – with all these titles describing how he spends his time, Nick Coleman has found the time to enlighten us about a number of topics, including growing up in a political family in St. Paul. His father was a long-term member of the Minnesota Senate and also majority leader of the Senate; a younger brother is the current mayor of St. Paul. His own career path didn't find him in politics, but he found controversy and commentary to be his muse along the way. As Editor-in-Chief of the Minnesota Daily, he studied journalism at the University of Minnesota, and also left his mark on the school newspaper. He has been a Leadership Fellow at the Bush Foundation, a columnist for both the St. Paul Pioneer Press and Minneapolis Tribune, and a major contributor to Uptake, an online news gathering organization. A fascinating evening is promised as Nick Coleman takes center stage at College Club.

Mary Beth Crowley, Evening Programs

**Third Tuesday, February 21
10:00 a.m. Book Discussion
Library**



Shadow Tag, by Louise Erdrich. *Shadow Tag* won the National Book Critics Circle Award. It is the story of the final months of a destructive marriage told by excerpts from two diaries, one real and one fake, after discovering that her husband has been reading her diary. “Erdrich has always been a master of metaphor; here she uses the Native belief of shadows as souls to powerful effect,” wrote reviewer Yvonne Zipp, *Christian Science Monitor*.

Billie Franey
Coordinator

**10:45 a.m. Meeting Begins
February 21, 11:00 a.m.
JOAN GRIFFITH: JOURNEY IN JAZZ**



Joan Griffith appears on our stage by popular demand from members who have taken her music classes at the University of St. Thomas. In addition to her roles as teacher and composer, Joan is a multi-talented jazz artist who plays guitar, bass and mandolin, and who has recorded with many local singers and instrumentalists. She is also a roster artist in jazz for COMPAS, the Minnesota State Arts Board, and Young Audiences. Joan will guide us through jazz history from its roots in Blues and Ragtime through Dixieland, Swing Bebop, Cool Jazz and Modern styles. Performing on guitar, she will illustrate American social and historical contexts that have shaped the development and performance of jazz. You won't want to miss this delightful and witty woman.

Jane Frazee
Cultural Arts



February 21, 1:00 p.m.
YOUTH PERFORMANCE COMPANY

Jacie Knight, Artistic Director of Youth Performance Company, established the theater in 1989 in a special arrangement with Minneapolis' Theatre in the Round. The company quickly became the place for young artists to develop their artistic talents and to produce original, professional-quality work. In 1993, YPC became an independent tax-exempt organization. Thus for twenty-two years, Youth Performance Company has empowered young people, instilling core values of creativity, responsibility, and quality – while also providing Twin Cities families with affordable theater. Ms. Knight will be joined by two people from the performance company. She will share stories of her journey with this remarkable theater, and perhaps tell us a bit about their February play, *And a Child Shall Lead*.

Judy Leahy Grimes
Diversity Committee

Fourth Tuesday, February 28
9:59 a.m. Mystery Hour

Deadly Reunion by Ron Handberg. The Twin Cities is the setting for this story of a TV journalist who gets into trouble at his high school's 20-year class reunion when he's caught up in a tangle of teenage passions, a long-lost first love, and finding justice for a woman he hardly knew.



Carolyn Oliver

10:45 a.m. Meeting Begins

February 28, 11:00 a.m.

MUDDY WATERS AND THE MINNESOTA RIVER BLUES

This is geology like you never learned it in school. Prepare to be informed and enlightened. Dr. Carrie Jennings has been a geologist for twenty-three years at the Minnesota Geological Survey, part of the School of Earth Sciences at the University of Minnesota, where she conducts primary research through geologic mapping. She has taught at the undergraduate and graduate levels. She has had field experience in glaciated regions around the world. Carrie has recently applied her knowledge of the history of Minnesota glaciation to explain how surface water quality issues relate to the ways in which watersheds are still responding to late glacial events.

Mary Crampton
Public Policy



February 28, 12:00 noon

Prospective Member Event, Library

February 28, 1:00 p.m.

JANE CURRY ON WOMEN'S HISTORY

Jane Curry is an author, storyteller, performer, and “recovering academic” with a knack for provoking both thought and laughter with her one-woman shows. She will be leading us in a discussion on how the roles of women have changed over the years and delighting us with some excerpts from two of her shows. The first show, *Nice Girls Don't Sweat*, is a tribute to the 40th anniversary of Title IX. As we round the corner into March Madness, Jane will also be helping us celebrate Women's History Month through excerpts of her show *Samantha 'Rastles' the Woman Question*. This should be a thought-provoking hour, in between the tears of laughter.

Lauri Salverda
Women's Issues



THURSDAY, MARCH 1 WALKER ART CENTER CONTEMPORARY ARTS FORUM

Our St. Paul Branch of AAUW joins the Minneapolis Branch for informative tours of Walker's current exhibits. Our group meets on Thursdays at 11 a.m. in the conference room at Walker. A trained tour guide is assigned to our group for the year. Again this year there will be four sessions for \$40; free for Contributing Level members (\$250/year). To attend, just bring your check to the first tour. An active Walker membership is required of all CAF participants. Meeting dates, times, and exhibitions are as follows:

March 1, 11 a.m. *"Lifelike"* (Meet in the Art Lab)
April 26, 11 a.m. *"Merce Cunningham"*

Our contact at Walker is Courtney Gerber 612-275-7574
If you want to participate, call Norma Cashill at
651-454-1287 or 512-751-2968
Please join us this year!!!

First Monday, March 5
9:30 a.m. Executive Board Meeting

First Tuesday, March 6

10:15 a.m. New Member Coffee & Chat
10:45 a.m. Meeting Begins

Tuesday, March 6
11:00 a.m.

WOMEN MAKING CHANGE – The Video

Sandy Wollschlager, former State Representative and Red Wing AAUW branch member, will describe the process of creating the collaborative film which documents political women in Minnesota. National AAUW grant money was awarded for the creation of the film. TPT partnered with Sandy and her colleagues to bring us these stories about our role models in local politics. Come enjoy the viewing narrated by the creator.



Sara Kuether
Program Development



Tuesday, March 6
1:00 p.m.
POLITICS OF TITLE IX AND
THE FEMALE ATHLETE

Libby Sharrow, a recipient of the 2011-2012 AAUW American Fellowship Award, is a PhD. Candidate in the Department of Political Science at the University of Minnesota. Her dissertation, “Producing Athletes, Defining Citizens: Title IX and the Construction of Gender in American Politics,” explores the ways in which, over the past 40 years, Title IX’s implementation has shaped political understandings of gender, sex, and women’s citizenship. She is also currently collaborating in two studies: “When Women Run, Women Win: Evidence From a Strong Party State” and “Gender Consciousness and Convention Delegates’ Evaluations of Hillary Clinton and Sarah Palin.”

Phyllis Merrill and Phyllis Erickson
AAUW Funds

Second Tuesday, March 13

10:30 a.m. Branch Business Meeting
March 13, 11:00 a.m.
AN IMMIGRANT WITH GLOBAL
AWARENESS



Dr. Efe Agbamu will relate her joys, obstacles, and successes as a Nigerian immigrant. She is an energetic lady who was named Minnesota 2011 Principal of the Year; she brought global awareness and pride to an area high school by introducing the International Baccalaureate Program. Currently Director of ELL programs with St. Paul Public Schools, she continues to aid other immigrants through programs in Spanish, French, Somali, Hmong, and Mandarin.

Mary Ellen Drier
International Relations

March 13, 1:00 p.m.

GREAT DECISIONS. Chapter 3: “Mexico.” Mexico’s border with Central America, as well as the border it shares with the U.S., has been a pathway for people, goods, crime and contraband in both directions. How can Mexico address these trans-border challenges? What is the future of Mexico’s relations with its northern and southern neighbors? How will Mexico’s foreign relations affect its domestic politics?



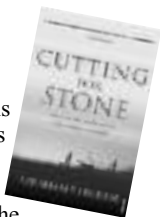
Mary Schankler
Program Development

Thursday, March 15
Evening Program
5:00 Refreshments
6:00 Dinner
7:00 Program: To Be Announced

Third Tuesday, March 20

10:00 a.m. Book Discussion
Library

Cutting For Stone, by Abraham Verghese. This is a fascinating novel that revolves around what is broken -- family ties, trust, and complicated physical issues -- and the process these characters go through to rebuild their lives. The story starts with the unexpected birth of twin boys to a dedicated nurse, who is also a nun, living on the outskirts of Addis Ababa, Ethiopia. Characters evolve and grow in the midst of political turmoil and their own personal struggles, until events send several characters to the United States, where the plot ends with dramatic consequences.



Margaret Gromer



10:45 a.m. Meeting Begins
March 20, 11:00 a.m.
GLOBAL CLIMATE CHANGE

Dr. John Abraham, nationally known climatologist from The University of St. Thomas, will discuss climate change by presenting evidence that humans are warming the planet. In November, 2010, Dr. Abraham and two colleagues launched the Climate Science Rapid Response Team to provide rapid, high-quality scientific information to the media and government decision-makers. The intention of this group is to enable scientists to share their work directly with the general public. Dr. Abraham will share with us some upcoming events that will help us move toward a cleaner, healthier, and more sustainable future.

Mary Crampton
Public Policy

March 20, 1:00 p.m.
SALUTING WOMEN IN THEATER

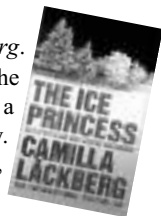


In honor of Women in History Month, we salute women in the Twin Cities theater community. Next to New York City, the Twin Cities area has the greatest number of theaters in the United States, but did you know that women are a major force behind the scenes in these theaters? Sharing their stories today will be four women from the Guthrie Theater who hold leadership positions. Cindy Berg, Company Manager, is in charge of actors' needs from casting to closing; she also hosts opening night parties. Patricia Olive, Props Manager, oversees a prop shop that creates the incredible range of properties that Guthrie actors might need on stage. Christine Richardson, Costume Workroom Manager, has designed costumes for Guthrie productions as well as for other theaters in the area, and coordinates the operation of the Costume Department. Carla Steen, Dramaturg/Publications Manager, prepares actors and artistic staff with background information for each production and supervises the publication of programs for each play.

Jacque Frazzini
Cultural Arts

Fourth Tuesday, March 27
9:59 a.m. Mystery Hour

The Ice Princess, by Camilla Läckberg.
Returning to her hometown of Fjällbacka on the west coast of Sweden, writer Erica Falck finds a community on the brink of tragedy. The apparent suicide of her childhood friend, Alexandra, is just the beginning.



Carolyn Oliver

Tuesday, March 27

10:45 a.m. Meeting Begins

March 27, 11:00 a.m.
LIVING WITH THE LAND:
KATHERINE HOLM



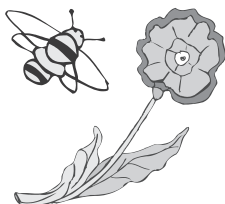
Katherine Holm is an author who writes about people and how they are shaped by land and place. Katherine lived in large cities for 35 years. She now lives in Minnesota with her husband on ten acres in the boreal forest. Katherine will describe her life, her writing, and her experience in living close to the land, and read from her novel *My Heart is a Mountain: Tales of Magic and the Land*.

Ellie Niederkorn
Diversity Committee

March 27, 1:00 p.m.
THE IMPORTANCE OF BEES

Bees play a key role in the productivity of agriculture and the beauty of our world through the pollination of fruits, vegetables, nuts, and flowers. The disruption of natural habitats leading to lack of “bee flowers,” the widespread overuse of pesticides, and numerous bee diseases and parasites have pushed honey bees to the tipping point. Our native bees are also in decline for similar reasons. Maria Spivak, “The Bee Lady,” will discuss how everyone can help bees and turn this crisis around to keep bees healthy and on their own six feet.

Sandy Crum
Education



First Monday, April 2
9:30 a.m. Executive Board Meeting

First Tuesday, April 3

10:15 a.m. New Member Coffee & Chat
10:45 a.m. Meeting Begins

April 3, 11:00 a.m.
EPIDEMIOLOGY: A VIEW
FROM THE TRENCHES



We are all aware of fast-moving epidemics, severe food-borne illnesses, disease-resistant bacteria, and threats of bioterrorist attacks. Today's speaker is Dr. Ruth Lynfield, Minnesota's State Epidemiologist.

She and her agency are our frontline defense against all these. Dr. Lynfield and her agency are charged with preparing for and managing outbreaks, preparing for pandemics, educating and keeping the public informed about public health threats. Dr. Lynfield will speak on "Hot Topics from the Minnesota Department of Health; a View from the Trenches."

Linda Feist
Public Policy/Environment

April 3, 1:00 p.m.
TEENWISE MINNESOTA

A representative of TeenWise Minnesota (formerly Minnesota Organization on Adolescent Pregnancy, Prevention and Parenting) will be discussing how the teaching of "Sex Ed" in the schools has changed over the years, and how the topic is handled in Health Education Class in our schools today. Please join us for an informative and thought-provoking discussion.

Lauri Salverda
Women's Issues



**Second Tuesday, April 10
10:30 a.m. Branch Business Meeting**

April 10, 11:00 a.m.

**GRACE O'MALLEY: A WOMAN PIRATE
SAILS THE SEAS**

Janet Rith-Najarian earned graduate degrees in both geography and environmental science. She trained as part of the production crew at Lakeland Public Television, and began her “Through the Lens” internship. Her first documentary told the true tale of Irish sea captain and pirate Grace O’Malley, who took up piracy against British ships who were attempting to conquer Ireland during the Elizabethan Era. Janet’s Living History presentation will include Grace’s tales of travels on the high seas, as well as a discussion of the important contributions she made to the geography and history of the British Isles. You will enjoy her portrayal of this amazing international woman.



Jill Ehlen
International Relations

April 10, 1:00 p.m.



GREAT DECISIONS. Chapter 4:
“Cybersecurity.” The securitization of cyberspace has caused a sea of change for both governments and the private sector: new threats, new battlegrounds and new opportunities. Faced with challenges such as international cybercrime and authoritarian control of networks,

how will the U.S. and its democratic allies approach the cyber frontier?

Mary Schankler
Program Development

Third Tuesday, April 17

10:00 a.m. Book Discussion Library

Book Choices for 2012-2013. We have six months of book discussions in the next year. There are some really good ones you may want to recommend. Even if not picked for discussion, we are interested in hearing about good reads.

Billie Franey
Coordinator

10:45 a.m. Meeting Begins

April 17, 11:00 a.m. WILLIAM YANG, PIANIST



The Cultural Arts Committee is proud to present a remarkable ten-year-old prodigy, William Yang, as their final program before summer break. William is from Eden Prairie. He is home-schooled and has studied piano with Dr. Paul Wirth since age 5. He also studies with Andre Watts at Indiana University. He was the soloist in NPR's "From the Top" program, and a finalist in the Young Artist World Piano Festival Concerto Competition, Junior Division, in 2009, 2010, and 2011. We are indeed privileged to hear a concert by this very promising young artist.

Elizabeth J. Indihar
Cultural Arts Committee

April 17, 1:00 p.m.
PROPOSED MARRIAGE AMENDMENT

On the ballot for November 2012 will be a proposal to amend the State Constitution. To help us understand this seemingly benign proposal we have asked a panel of experts to give background information. The panel includes a professor of Rhetoric and Communications from the University of Minnesota; a staff member of the Minnesota Branch of the American Civil Liberties Union; a Workers Compensation judge, and a theologian. It will be an educational discussion describing the more than 500 benefits that married couples in Minnesota enjoy through State legislation that are currently denied same-sex couples living in committed and loving relationships. This presentation will offer relevant information that AAUW voters can use to evaluate the amendment as a civil and human rights issue.



Lois Snook
Program Development



Thursday, April 26
11:00 a.m. Contemporary Arts Forum:
Merce Cunningham

(See March 1 Program Information)

Scholarship Awards Dinner

Tuesday, April 24

Join us for this special occasion to
honor our 2012 Scholarship Awardees
and their families

Gathering and Tours for Guests: 5:30

Dinner: 6:00

Awards and Program: 7:00

Cost: \$20

(There will be no daytime meeting that day.)

Carol Oeltjenbruns
Scholarship Chair

BRANCH NEWS

Proposed Bylaws Change

The Scholarship Trust Committee and the Bylaws Committee are recommending a change to the Bylaws, to be voted on by the Board and the general membership in February or March:

Article XIII...Committees...k. Scholarship Trust Committee...1. The Scholarship Trust Committee shall consist of five (5) members. This will be changed to “no fewer than five (5) members and no more than seven (7) members.” The rationale: to provide greater flexibility and wider participation in the Scholarship Trust.

Kathy Arnold

Bylaws Chair

Report of Nominating Committee, 2012:

Chair Beda Lewis, Claire Benson, Jane Hagedorn, Mikel Clifford, Kathy Haynes

Alternates: Ellie Neideerkorn, Mary Elrod

The Nominating Committee would like to submit the following names for nomination for 2012:

President: Mary Chorewcycz

VP for Administration: Tamara Sparks

VP for Program Development: Sara Kuether

Membership treasurer: Fran Cummins

Branch Topic Chairs:

Cultural Arts: Carolyn Oliver

Education: Co-Chairs Kathy Haynes and Mikel Clifford

International Relations: Co-Chairs Dee Ann Nelson and Jill Ehlen

Educational Foundations/ Legal Advocacy Fund

Co-Chair Phyllis Merrill and Phyllis Erickson

Women's Issues: Laura P. Salverda

Nominating Committee- Mary Sperl, Carolyn M. Adams, Mary Drier,

Twylah Dietzman, Joanne DuBois

Alternates: Lois Snook, Kathleen Ziegler

Beda Lewis

Nominating Committee

PLANT CARDS

A great gift for the gardener in your life!

As a way to help gardeners and help our **Ways and Means Fund** we are pleased to again offer the Gertens and Linders Plant Cards.

This year we will only have them available from September through May.

Our profit is 15% of each card sold.

- We have **Gertens Plant Cards** for \$25. They can be used any time. (There is NO expiration date for anything).
- The second way to support us is to buy a \$25 **Linders Plant Card**. Again, these are non -expiring.

Please support these as they benefit the *Scholarship Trust Fund*, the *Educational Foundation*, and the *Legal Advocacy Fund*.

Cathy Jansen 651-699-2163

Carol Barry 651-455-3660

Bridge Groups

College Club has two bridge mixers that meet during the year. The year starts in January and ends in November. There is no regularly scheduled bridge during the summer. If you are interested in joining one of these groups in 2012, please call one of the chairwomen for that group.

Dessert Bridge in the homes:

Donna Oman 651-771-0227

Marlys Larson 651-483-6949

First Thursday Bridge at the Clubhouse, starting in February:

Marilyn St. Martin 651-647-0880

Sherrill Wright 651-342-0665

Timely Report

You are welcome to send articles and news to the Timely for publication. Deadlines are always the first Thursday after the board meeting. Items should be sent to Mary Schrankler.

HR/Business News:

Special Dietary Needs

Our staff would like to accommodate your special dietary needs.

If you have health issues or are vegetarian or have guests who are vegetarian, please state that fact when you make your reservation by phone or email. That way they will be able to be prepared. Also at the table, please announce yourself to the server so that the staff knows who you are and can serve the proper selection.

Julia Lyon

HR/Business Committee

Scheduling Meetings

Please be very sure to let our Business Office know if you schedule a committee meeting or small group meeting in the house. There are green forms in our office you can fill out for this, but, if necessary, you can phone the office to let them know. Remember also to inform the office if you change the date of the meeting. There are several reasons for this; being sure the house is open and ready for you is the main one.

Check out Our Website

The attractive, user-friendly St. Paul College Club website offers AAUW-St. Paul Branch members useful information about our wonderful clubhouse. Check it out when you are next on-line. Advise prospective AAUW members to learn more about the club via the website. Recommend the club and its website to people who are seeking an event location. www.stpaulcollegeclub.com

Share the Good News about Our Clubhouse

When you recommend the St. Paul College Club to friends, neighbors, business associates and family members, you are helping St. Paul AAUW. It is our business operation. When the College Club (SPCC) does well, we benefit. Business profits have supported many of the renovations we have completed and those still in progress.

Please share with those you know how the lovely, updated yet historic exterior and interior of our clubhouse can enhance any event. Let them know of the delicious menu options and the fine service provided by our capable and attentive staff. Truly, SPCC is a wonderful facility for weddings, anniversary celebrations, birthday parties, corporate events and festive holiday occasions. Please encourage those who are looking for the perfect location for their upcoming special occasion to contact the St. Paul College Club at 651-227-4477. Our event planners are talented in assisting each client in creating a personalized and memorable event.

University Club

The University Club has offered members of St. Paul Branch AAUW the opportunity to use their facilities. As an AAUW member you may use their dining facilities and participate in their non-athletic programs and events.

When making a reservation mention that you are an AAUW member. You would then pay for your meal by cash, check or credit card.

The University Club is located at 420 Summit Ave. Phone: 651-222-1751. Reservations are always appreciated.

OUR BRANCH WEBSITE AND PUBLICATIONS



Our branch communicates with members in many ways, including our own website and two regular written publications. Our branch website is <http://www.aauwstpaul.org>. Carol Sheggeby is our webmaster: csheggeby@msn.com

The **Timely Report** is a monthly newsletter and is distributed at meetings. It often contains information that was too late to get into the bulletin. If you have information to submit for possible inclusion in the **Timely Report**, contact Mary Schrankler at 651-738-1836 or email schrankler101@comcast.net.

The 990 News (this bulletin) is published four times a year and is mailed to members. If you have articles to submit for inclusion, email to kmzaske@aol.com If you have questions, contact editor Karen Zaske.

For those unable to attend meetings, you can view the **Timely Report** and **990 News** on our branch website (<http://www.aauwstpaul.org>).

Computer Available in Branch Office

The computer in the branch office is available for members' use. It is a standard Windows machine that is connected to the internet, email, printers, etc. The ID name and the password are located on the computer. Public libraries also provide free access to computers.

DUE DATES for BULLETIN COPY

Note new due dates!

July 25 for Sept–Oct issue

Sept 25 for Nov–Dec–Jan issue

Dec 30 for Feb–Mar–April issue

Mar 25 for May–August issue

Email articles to: kmzaske@aol.com

BULLETIN EDITOR

Karen Zaske, kmzaske@aol.com, 763-577-0901

MEMORIAL CONTRIBUTIONS

A contribution to any of four AAUW and St. Paul Branch funds makes a truly fine memorial gift or commemoration of a special event. Fill out the form below and mail your check. An acknowledgement of the contribution on a special card will be sent immediately to the person you indicate, and you will receive a thank you for your gift.

Please check fund to which you wish this gift donated:

____ AAUW Educational Foundation

____ AAUW Legal Advocacy Fund

____ St. Paul Branch Scholarship Trust

____ St. Paul Branch House Preservation Fund

In memory/honor (circle one) of _____

Acknowledge to _____

Address _____

City, State, Zip _____

Donor's Name _____

Address _____

City, State, Zip _____

Amount \$ _____ Date _____

Please make checks payable to St. Paul Branch - AAUW and use the memo line on your check to designate the fund you have chosen. Undesignated contributions will be given to one of the four funds by the Memorials Chair. Send to Treasurer, St. Paul AAUW, 990 Summit Avenue, St. Paul MN 55105. Donations to the Educational Foundation, Legal Advocacy Fund, and the Scholarship Trust are tax deductible. Donations to the House Preservation Fund are not tax deductible.

If you have any questions, please call **Carol Gregorson** at **651-690-4580**.



American
Association of
University
Women

AAUW advances equity for women and girls through advocacy, education, and research.

- Mission Statement

AAUW will be a powerful advocate and visible leader in equity and education through research, philanthropy, and measurable change in critical areas impacting the lives of women and girls.

- Vision Statement

By joining AAUW, we belong to a community that breaks through educational and economic barriers so that women have a fair chance.

- Promise Statement



The St. Paul Branch of the
American Association of University Women

990 Summit Avenue St. Paul, Minn. 55105

Non-Profit Org.
U.S. POSTAGE

PAID

TWIN CITIES, MN
Permit No. 820

ADDRESS SERVICE
REQUESTED

Time Sensitive Material