

Water Resources Center

UNIVERSITY OF MINNESOTA

Driven to DiscoverSM



Current Challenges in Managing Water Resources and Practical Actions You Can Take to Live More Sustainably

MARCH 12, 2024 | AAUW, ST PAUL, MN

Maggie Karschnia, University of Minnesota WRC & MN Sea Grant

Polluted Waters



Adopt a Storm Drain!
mn.adopt-a-drain.org

Storm drains lead to area lakes and rivers. Help keep them clean by adopting a storm drain to clean twice a month. It takes 15 minutes!

1. Sign Up **2. Sweep & Scoop** **3. Dispose**

ANOKA
CONSERVATION
DISTRICT

ADOPT
A STORM
DRAIN

How can I Help?

- Adopt -a-Drain
- Use Native Plants
- Smart Salting
- Pick Up Pet Waste
- Wash Cars at Carwashes
- Compost Yard Waste
- Filter Your Laundry



Polluted Waters



How can I Help?

- Adopt-a-Drain
- **Use Native Plants**
- Smart Salting
- Pick Up Pet Waste
- Wash Cars at Carwashes
- Compost Yard Waste
- Filter Your Laundry

[CLICK HERE](#) to find the perfect plants for your yard!



Polluted Waters



1. Shovel

Clear walkways before snow turns to ice. Apply salt only if needed.



2. Scatter

Use salt only where critical. Aim for 3 inches of space between salt granules.



3. Switch

Salt doesn't melt ice below 15 degrees. Use sand for traction when it's too cold, or a different de-icer.



4. Sweep

Clean up leftover salt, sand, and de-icer to save and reuse as needed.

How can I Help?

- Adopt-a-Drain
- Use Native Plants
- **Smart Salting**
- Pick Up Pet Waste
- Wash Cars at Carwashes
- Compost Yard Waste
- Filter Your Laundry



Polluted Waters



**There
is no
poop
fairy!**

How can I Help?

- Adopt-a-Drain
- Use Native Plants
- Smart Salting
- **Pick Up Pet Waste**
- Wash Cars at Carwashes
- Compost Yard Waste
- Filter Your Laundry



Polluted Waters



How can I Help?

- Adopt-a-Drain
- Use Native Plants
- Smart Salting
- Pick Up Pet Waste
- **Wash Cars at Carwash**
- Compost Yard Waste
- Filter Your Laundry



Polluted Waters

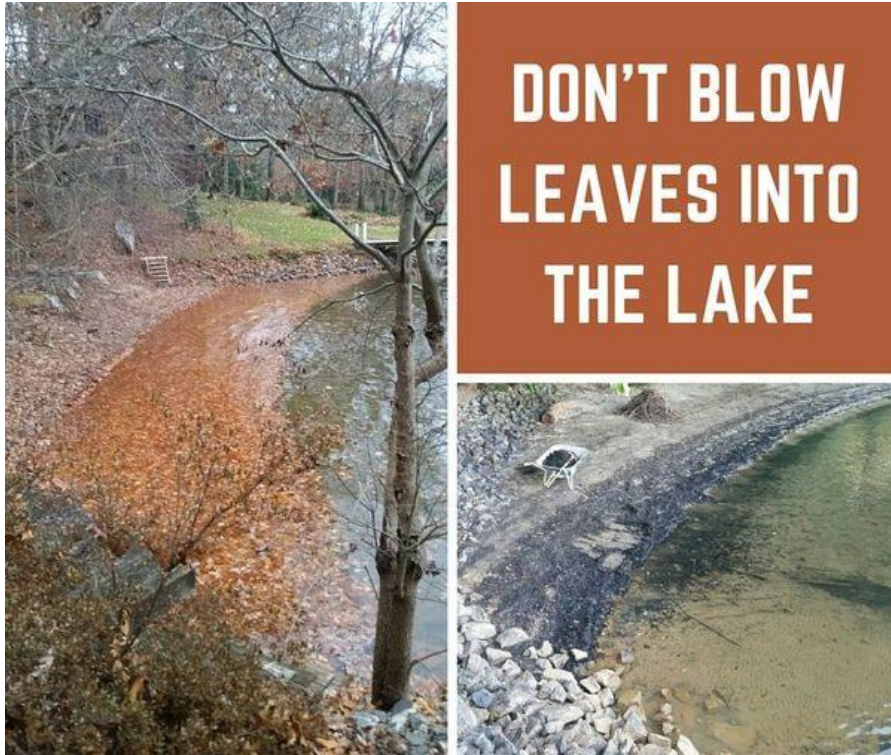


Image Credit: [Catawba Riverkeeper Foundation](#)

How can I Help?

- Adopt-a-Drain
- Use Native Plants
- Smart Salting
- Pick Up Pet Waste
- Wash Cars at Carwashes
- **Compost Yard Waste**
- Filter Your Laundry



Polluted Waters



9 WAYS TO REDUCE MICROPLASTICS IN LAUNDRY



1
Wash less & less often,
to save energy too



2
Spot clean clothes instead
of a full wash cycle



3
Wash at 30 C or lower



4
Limit the amount of
detergent you use



5
Use shorter cycles &
less intensive spins



6
Avoid bleach, which
damages your clothes too



7
Use a washing machine
filter or a microfilter bag



8
Hang dry laundry rather
than in a tumble dryer



9
Hand soak sportswear,
causing little agitation

LESS
PLASTIC.

IN COLLABORATION WITH

fall

WWW.LESSPLASTIC.ORG.UK

How can I Help?

- Adopt-a-Drain
- Use Native Plants
- Smart Salting
- Pick Up Pet Waste
- Wash Cars at Carwashes
- Compost Yard Waste
- **Filter Your Laundry**

[CLICK HERE](#) for GuppyFriend or [CLICK HERE](#) for Filtrol filter

